

Street Sweeping --Base Sweeping-- (Swept Every Month Year-round) City of Rosenberg, Texas

Street Sweeping by Week

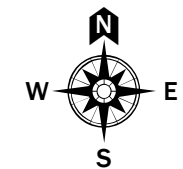
Street Sweeping Week 1 Days (Base)

- █ Monday
- █ Tuesday

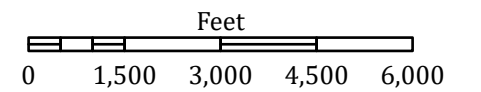
Trash Days

- Mon/Thur (Yard/Bulk - Mon)
- Tues/Fri (Yard/Bulk - Tues)

Inclement Weather will divert Monday sweeping to Thursday and Tuesday sweeping to Friday

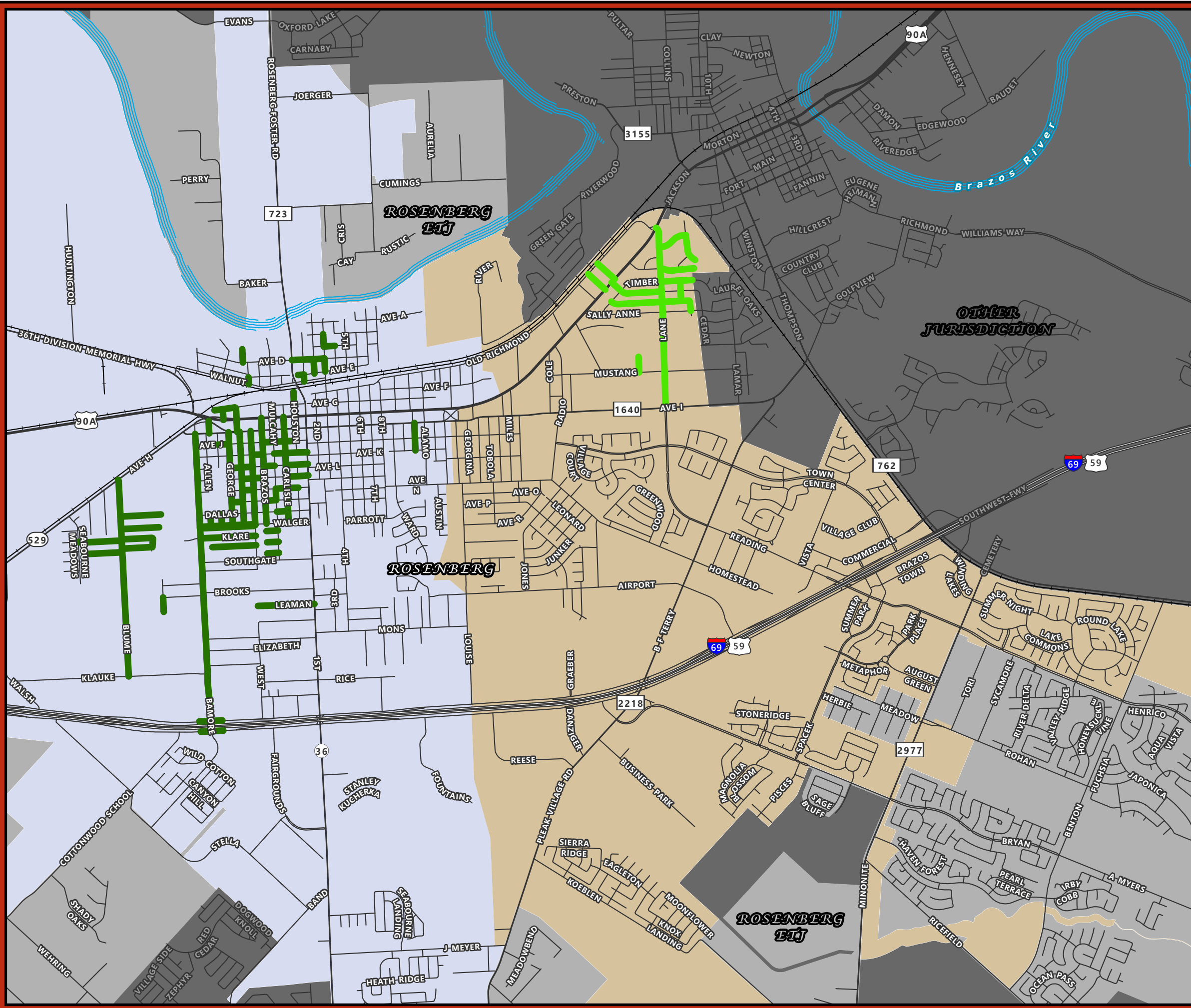


Scale:
1:36,000
or
1 in = 3,000 ft



Created by: City of Rosenberg GIS - Cory Vardaman
Date Created: June 19, 2023
Original Size: 11" x 17"

This product is for informational purposes and may not have been prepared for or be suitable for legal, engineering, or surveying purposes. It does not represent an on-the-ground survey and represents only the approximate relative location of geographic features.



Street Sweeping --Base Sweeping-- (Swept Every Month Year-round) City of Rosenberg, Texas

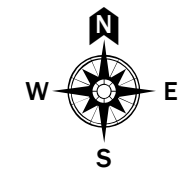
Street Sweeping by Week
Street Sweeping Week 2 Days (Base)

- █ Monday
- █ Tuesday

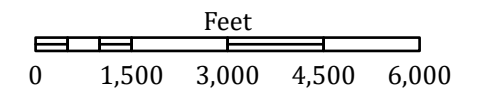
Trash Days

- Mon/Thur (Yard/Bulk - Mon)
- Tues/Fri (Yard/Bulk - Tues)

Inclement Weather will divert Monday sweeping to Thursday and Tuesday sweeping to Friday

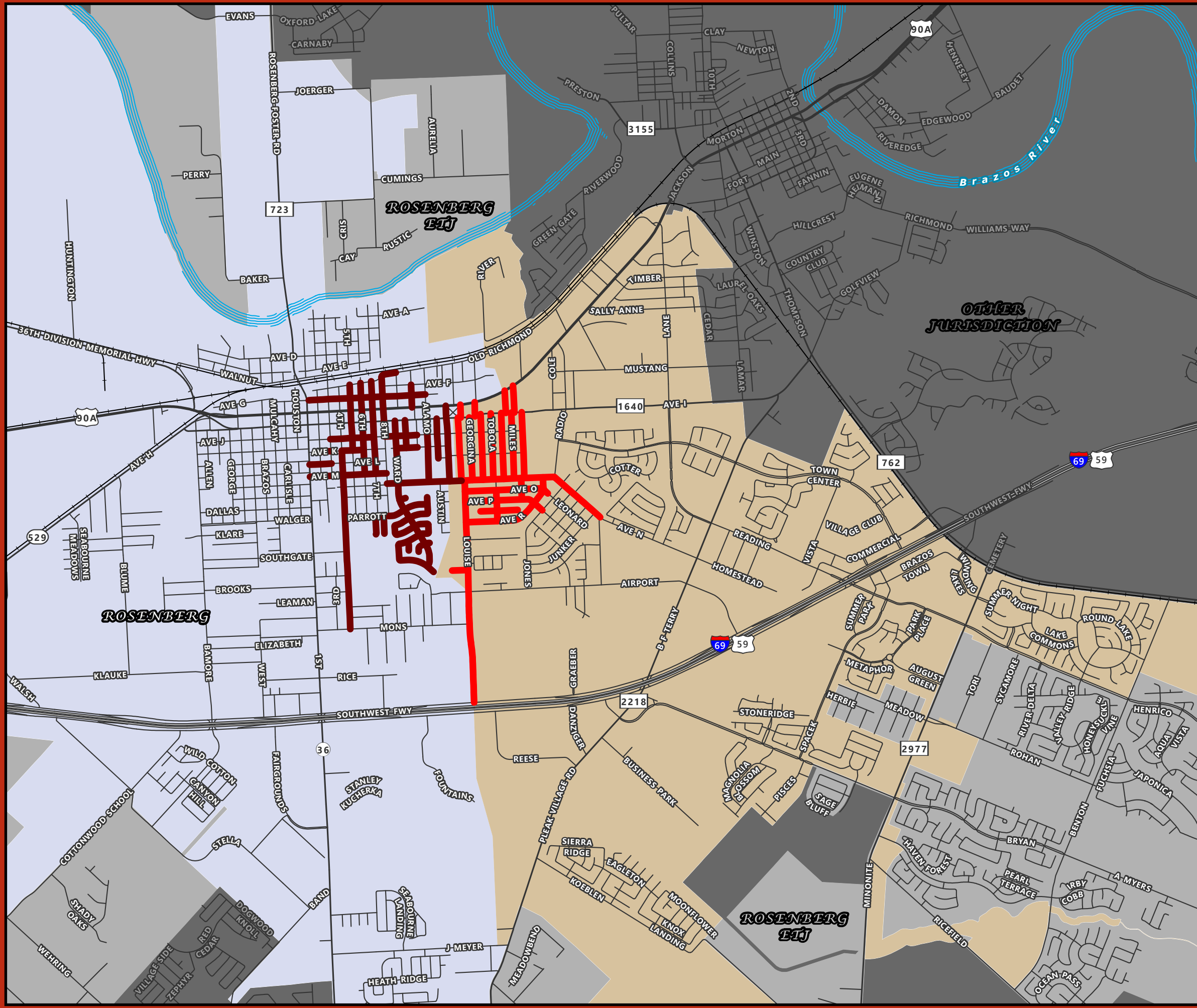


Scale:
1:36,000
or
1 in = 3,000 ft



Created by: City of Rosenberg GIS - Cory Vardaman
Date Created: June 19, 2023
Original Size: 11" x 17"

This product is for informational purposes and may not have been prepared for or be suitable for legal, engineering, or surveying purposes. It does not represent an on-the-ground survey and represents only the approximate relative location of geographic features.



Street Sweeping --Base Sweeping-- (Swept Every Month Year-round) City of Rosenberg, Texas

Street Sweeping by Week

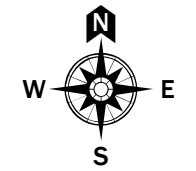
Street Sweeping Week 3 Days (Base)

- █ Monday
- █ Tuesday

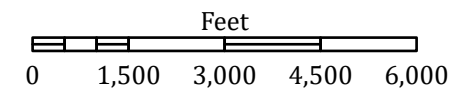
Trash Days

- Mon/Thur (Yard/Bulk - Mon)
- Tues/Fri (Yard/Bulk - Tues)

Inclement Weather will divert Monday sweeping to Thursday and Tuesday sweeping to Friday

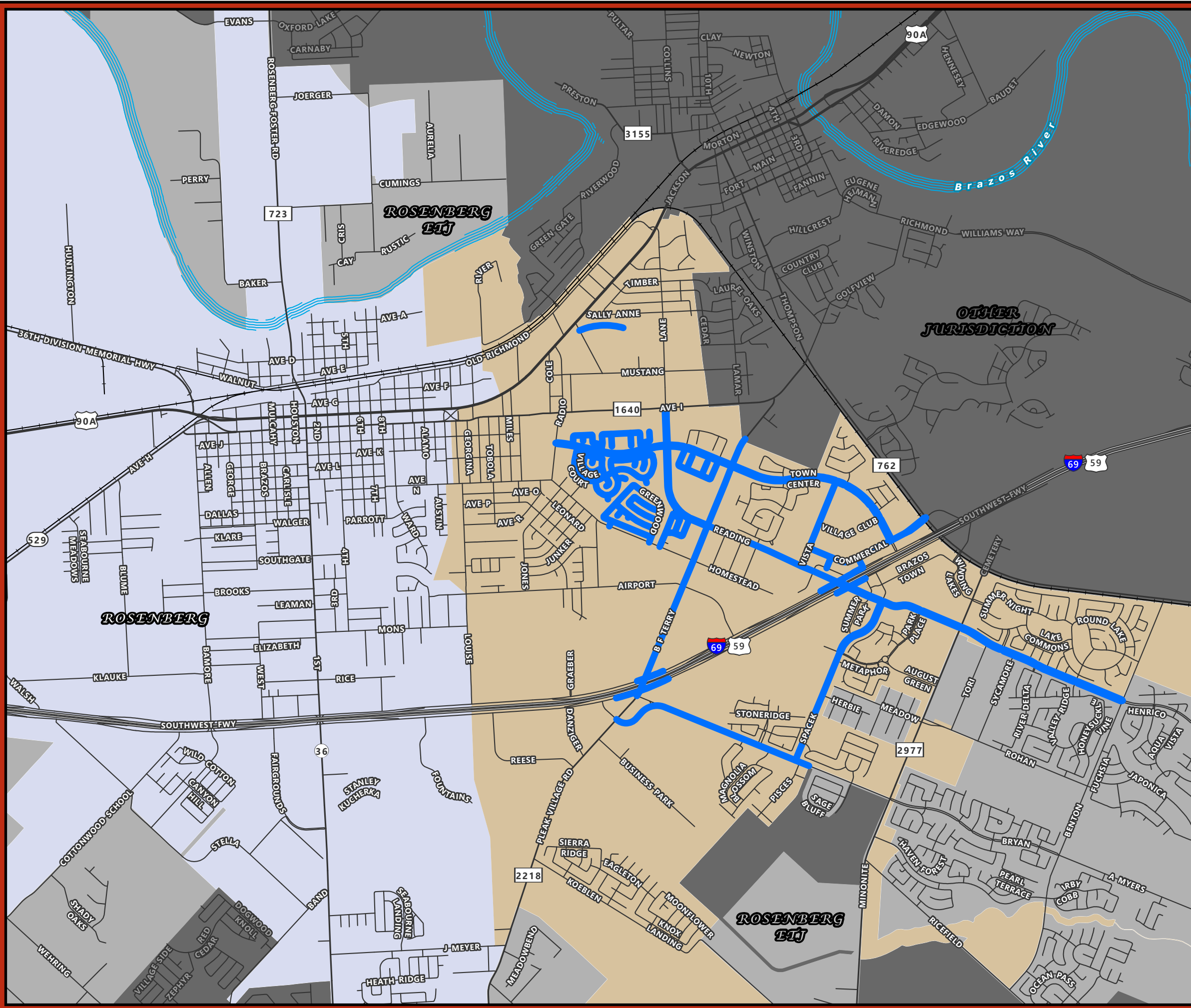


Scale:
1:36,000
or
1 in = 3,000 ft



Created by: City of Rosenberg GIS - Cory Vardaman
Date Created: June 19, 2023
Original Size: 11" x 17"

This product is for informational purposes and may not have been prepared for or be suitable for legal, engineering, or surveying purposes. It does not represent an on-the-ground survey and represents only the approximate relative location of geographic features.



Street Sweeping --Base Sweeping-- (Swept Every Month Year-round) City of Rosenberg, Texas

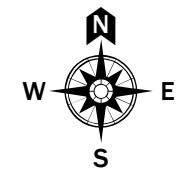
Street Sweeping by Week
Street Sweeping Week 4 Days (Base)

- Monday
- Tuesday

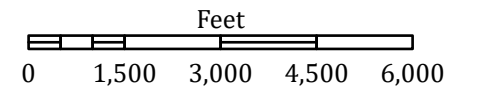
Trash Days

- Mon/Thur (Yard/Bulk - Mon)
- Tues/Fri (Yard/Bulk - Tues)

Inclement Weather will divert Monday sweeping to Thursday and Tuesday sweeping to Friday



Scale:
1:36,000
or
1 in = 3,000 ft



Created by: City of Rosenberg GIS - Cory Vardaman
Date Created: June 19, 2023
Original Size: 11" x 17"

This product is for informational purposes and may not have been prepared for or be suitable for legal, engineering, or surveying purposes. It does not represent an on-the-ground survey and represents only the approximate relative location of geographic features.

