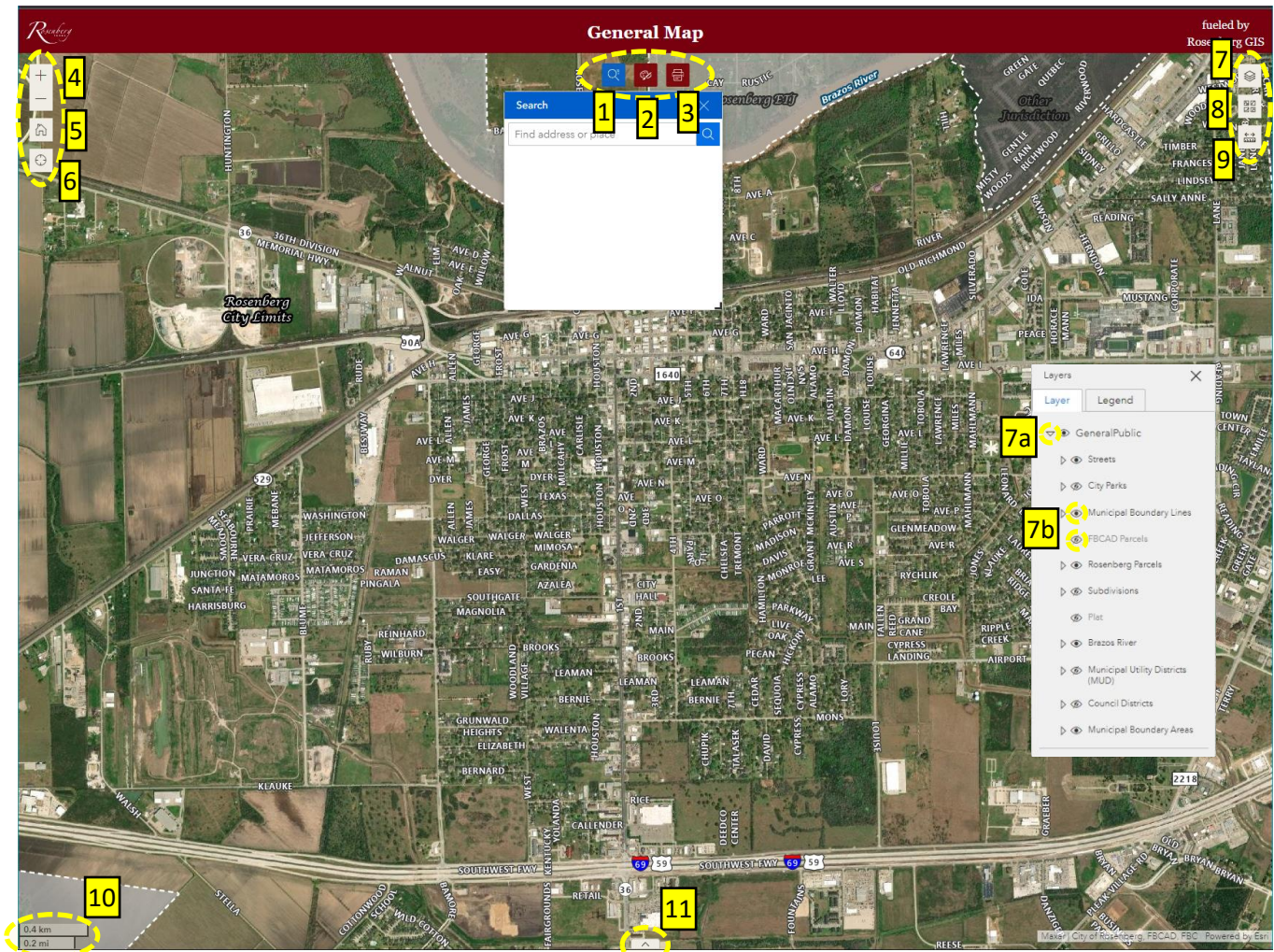


# Interactive Web Map Help



- 1) Search (Open at start) – search for address or business/common name
- 2) Draw – sketch circles, squares or freehand to show your linear or area of interest (also capable of measurement)
- 3) Print – print your map to a default esri layout
- 4) Zoom – zoom in/out
- 5) Home – brings the focus back to the original zoom level
- 6) Current Location – zooms to your current location (best if used with mobile devices)
- 7) Layers/Legend – turn layers off/on and view symbology
  - a. Layer Arrow – click this arrow to view sublayers
    - i. The only arrow that needs to be open is the top arrow as others are simply to clean up the layout
  - b. Eye – turns the layer on and off (some layers are set to off and will need to be turned on to view)
- 8) Basemap – select the basemap
- 9) Measure – measure a line or area
- 10) Scale – the current scale
- 11) Share – click the up arrow to show different methods for sharing the map